

Roller Mixers

Ihr Fachhändler:
www.axon-labortechnik.de



Axon Labortechnik GmbH
Im Braumenstück 16 - D-67659 Kaiserslautern
Verkaufsbüro Tel. 06223/95 41 190 Fax: 06223/95 40 714
info@axon-labortechnik.de

- **Roller mixers for daily laboratory routines**
- **Removable rollers**
- **Wide speed range**
- **Low voltage power supply**

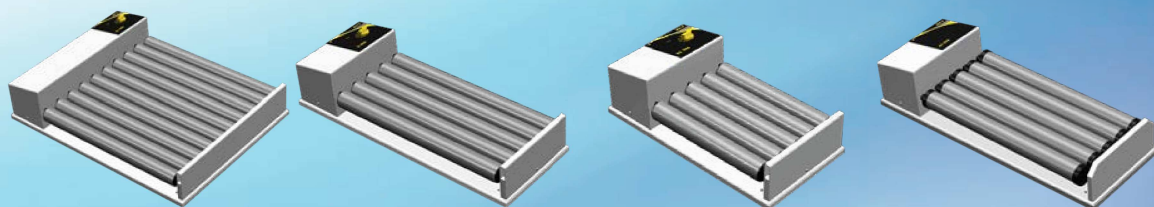


RM 5 / RM 10

Five or ten synchronized rotating PVC rollers provide a uniform and gentle swaying mixing of test tubes. Sufficient space allows for numerous test tubes to be placed horizontally along the surface of the oscillating rollers for simultaneous gentle and homogeneous mixing.

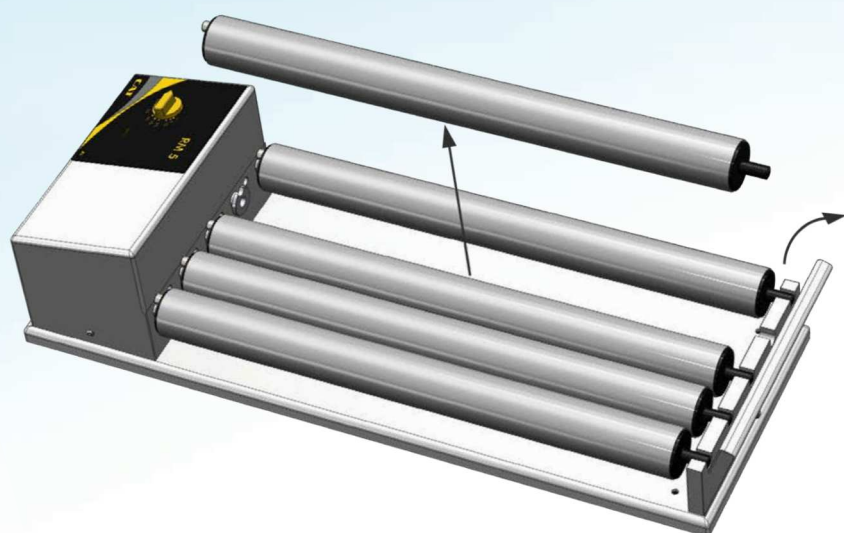
This kind of mixer is especially designed for the uniform mixing of medical laboratory tests of blood, haematological determinations and other cell suspension samples. In addition it prevents sedimentation in samples such as dyes, paints, oil and cosmetics, etc.

The models RM 5 and RM 10 have a 24 VDC drive, a power supply with connectors for EU, US, UK and AU is included. In these two models each roller can be removed individually without tools. These roller mixers move everything in your laboratory, from the test tube to 5l bottles.



| Technical Data | RM 10 | RM 5 | RM 5K | RM 5F |
|--|------------------------|------------------------|------------------------|------------------------|
| Speed range [1/min] | 4 - 30 10 - 70 | 4 - 30 10 - 70 | 4 - 30 | 40 |
| Length of rolls [mm] | 330 | 330 | 216 | 334 |
| Number of rolls | 10 | 5 | 5 | 5 |
| Removable rolls | Yes | Yes | No | No |
| Rolls material | PVC | PVC | PVC | PVC |
| Load, max. [kg] | 5.0 | 5.0 | 5.0 | 5.0 |
| Power supply [V] | See: order information | See: order information | See: order information | See: order information |
| Weight [kg] | 6.5 | 3.7 | 3.0 | 3.7 |
| Dimensions [WxDxH mm] | 360 x 480 x 113 | 180 x 480 x 113 | 180 x 340 x 113 | 180 x 480 x 113 |
| Protection class according to DIN EN 60529 | IP 32 | IP 32 | IP 32 | IP 32 |

| Order Information | Part Number | | | |
|-----------------------|-------------|------------|------------|------------|
| 24 VDC (rpm: 10 - 70) | 60207-0030 | 60207-0070 | | |
| 24 VDC (rpm: 4 - 30) | 60207-0100 | 60207-0110 | 60207-0060 | |
| 24 VDC (rpm: 40) | | | | 60207-0020 |



Make it suitable for your needs

| Accessories | Part Number | Description |
|-----------------|-------------|---|
| Centric rolls | 40207-0020 | Centric rolls for horizontal rolling movement without tilting |
| Excentric rolls | 40207-0010 | Standard rolls for rolling and tilting movement |