

Crystal Clear Cultivation, Safe Cell Growth



Crystal Technology & Industries

IS-DW Series



AEOLUS™ CO₂/Non-CO₂ 170L Incubator Shaker with Magnetic Drive (26mm or 50mm Orbit Models)



KEY FEATURES



PID Temperature Control

Automatic adjustment for high precision & stability



7" Color Touchscreen

Hi-resolution modular display presents status and function values in a clear and concise manner.



Alarms

Audible & visual alerts for parameter deviations



Static Shelf

Stainless steel shelf included, 556 × 472 mm



Sealed Magnetic Drive

Direct drive offers increased reliability and quiet operation



Cooling

18°C below ambient temperature



Performance Graphs

Real-time monitoring & trend logging



UV Disinfection

Built-in UV sterilization, magnetic drive



CO₂ Control

Optional 0–20% CO₂ on DC variants

MODEL OVERVIEW

| IS-DW | | IS-D5W | | IS-DCW | | IS-DC5W | |
|-----------------|------------|-----------------|------------|-----------------|-------------------|-----------------|-------------------|
| Orbit | Φ26 mm | Orbit | Φ50 mm | Orbit | Φ26 mm | Orbit | Φ50 mm |
| Speed | 30–400 rpm | Speed | 30–300 rpm | Speed | 30–400 rpm | Speed | 30–300 rpm |
| CO ₂ | — | CO ₂ | — | CO ₂ | 0–20% | CO ₂ | 0–20% |
| Humidity | — | Humidity | — | Humidity | ~95% RH | Humidity | ~95% RH |
| | | | | | + CO ₂ | | + CO ₂ |

IS-DW Series



Technical Specifications

Crystal Technology & Industries

| Specification | IS-DW* | IS-D5W | IS-DCW | IS-DC5W |
|---|---------------------------------------|------------|-----------------------------|------------|
| Temp. range | RT -18°C ~ 60°C (min. 4°C) | | | |
| Temp. accuracy | 0.1°C | | | |
| Temp. uniformity | ±0.3°C (@37°C) | | | |
| Speed range | 30–400 rpm | 30–300 rpm | 30–400 rpm | 30–300 rpm |
| Speed accuracy | 1 rpm | | | |
| Orbit diameter | Φ26 mm | Φ50 mm | Φ26 mm | Φ50 mm |
| CO2 control range | N/A | | 0–20% | |
| CO2 increment | N/A | | 0.1% | |
| CO2 control accuracy | N/A | | ±0.3% (@5%) | |
| CO2 recover time after door open for 30s | N/A | | ≤6 min (@5%, 30s door open) | |
| Relative humidity type | N/A | | Passive humidification | |
| Max. humidity | N/A | | Ambient RH ~ 95% | |
| Humidity increment | N/A | | 1% | |
| Humidity recover time after door open for 30s | ≤6 min (@37°C, 30s door open) | | | |
| Programmable Segments | 12 segments | | | |
| Disinfection | UV | | | |
| Door open direction | Leftward | | | |
| Display | 7" color capacitive touchscreen | | | |
| Max. load | 15 kg | | | |
| Static shelf dimension | 556 × 472 mm | | | |
| Static shelf to ceiling height | 125 mm | | | |
| Platform dimension | 460 × 460 mm | | | |
| Internal Working Height w/Shelf Installed | 368 mm | | | |
| Internal Working Height wo/Shelf Installed | 493mm | | | |
| Net Weight | 150 kg | | | |
| Internal Working Dimensions (WxDxH) | 582 × 525 × 620 mm (WxDxH) | | | |
| External Dimensions (WxDxH) | 745 × 784 × 728 mm (+80 mm with feet) | | | |
| Drive mechanism | Magnetic drive | | | |

***Power supply:** Available with both AC220V and AC110V power supply. Suffix "W" is for AC220V power supply.

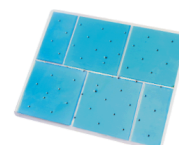
Max Loading & Max Speed: Stacked up to 2 units. The max shaking speed of the upper unit will be related to different loading.

Max Loading Capacity:

Clamp Capacity: 50ml×49/ 100ml×32/ 150ml×25/ 200ml×25/
250ml×25/500ml×16/ 1000ml×9/ 2000ml×6/
3000ml×5/ 5000ml×4
Sticky Mat: 50ml×64/ 100ml×49/ 150ml×36/ 200ml×36/ 250ml×25/
500ml×25/ 1000ml×9/ 2000ml×6/ 3000ml×5/ 5000ml×4



Flask clamp



Sticky Mat

IS-DW Series



Technical Specifications

Crystal Technology & Industries

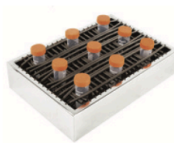
Accessories



Test Tube Rack



Adjustable Test Tube Rack



Mini Universal Spring Platform



Infusion Bottle Clamp



Flask Clamp



Stand for 170L Incubator Shakers



96-Well Microplate Holder



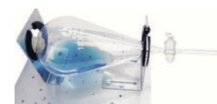
Sticky Mat



CO2 Cylinder Pressure Regulator



Multi-Microplate Holder



Fixture for Separating Funnel

| Item Number | Item Type | Specifications | Max Capacity | Item Number | Item Type | Specifications | Max Capacity | |
|-------------|------------------------|----------------------------|----------------------------------|-------------|---------------------------------|---|----------------------|--|
| IS-A50 | Flask Clamp | Holds 25mL Flask | 64 | IS-A33 | Infusion Bottle Clamp | Holds 500mL Infusion Bottle | 18 | |
| IS-A1 | | Holds 50mL Flask | 49 | IS-A34 | | Holds 1000mL Infusion Bottle | 9 | |
| IS-A2 | | Holds 100/125mL Flask | 32 | IS-A13 | Microplate Holder | 96-Well Microplate Holder | 12 | |
| IS-A3 | | Holds 150mL Flask | 25 | IS-A175 | Multi-Microplate Holder | Holds up to 6 Standard Microplates | 15 | |
| IS-A4 | | Holds 200mL Flask | 25 | IS-A167 | Deep Well Plate Holder | Holds 2 Deep Well Plates | 12 | |
| IS-A5 | | Holds 250mL Flask | 25 | IS-A35 | Fixture holds Separating Funnel | Holds Separating Funnels of ±500mL | 4 | |
| IS-A6 | | Holds 500mL Flask | 16 | IS-A169 | Sticky Mat | 140 x 140mm | 10 | |
| IS-A7 | | Holds 1000mL Flask | 9 | IS-A22 | Spring Frame | 450 x 400 x 80mm | 1 | |
| IS-A8 | | Holds 2000mL Flask | 6 | IS-A215 | Replacement Static Shelf | 18 x 18 in | 1 | |
| IS-A9 | | Holds 2.8L Fernbach Flasks | 5 | IS-A216 | Stand | Stand for 170L Incubator Shakers | 1 | |
| IS-A10 | | Holds 5000mL Thomson Flask | 4 | CIA25 | CO2 Cylinder Pressure Regulator | Max Inlet Pressure: 3000psi Max Outlet Pressure: 60psi | 1 (up to 2 units) | |
| IS-A225 | | Holds 4L Flask | 4 | | | | | |
| IS-A51 | | Tube Rack | Holds 50 Tubes x 1.5mL/2.0mL/5mL | 10 | | | | |
| IS-A11 | | | Holds 40 Tubes x Ø14mm | 4 | | | | |
| IS-A12 | Holds 40 Tubes x Ø16mm | | 4 | | | | | |
| IS-A23 | Holds 40 Tubes x Ø18mm | | 4 | | | | | |
| IS-A24 | Holds 27 Tubes x Ø22mm | | 4 | | | | | |
| IS-A42 | Holds 21 Tubes x Ø30mm | | 4 | | | | | |
| IS-A20 | Adjustable Tube Rack | Holds 40 Tubes x Ø14mm | 4 | | | | | |
| IS-A21 | | Holds 40 Tubes x Ø16mm | 4 | | | | | |
| IS-A30 | | Holds 40 Tubes x Ø18mm | 4 | | | | | |
| IS-A31 | | Holds 27 Tubes x Ø22mm | 4 | | | | | |
| IS-A32 | | Holds 21 Tubes x Ø30mm | 4 | | | | | |
| IS-A37 | | Holds 24 Tubes x Ø30mm | 2 | | | | | |

NOTE: 3000mL flask clamps (IS-A9) are available for use with 2.8L Fernbach flasks. Flasks must be shorter than the working height of the incubator shaker chamber (300mm).